

**SiELC**



**SAMPLIFY™  
AUTOMATED  
SAMPLING SYSTEM**

# SAMPLIFY™ AUTOMATED SAMPLING SYSTEM

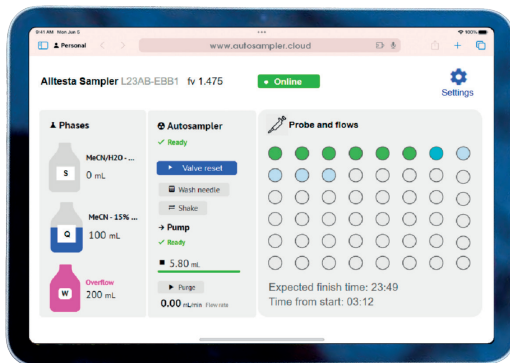
## Introduction

The **Samplify™ Automated Sampling System** performs sampling in environments with high pressure, high temperatures, or other extreme and hazardous conditions without the need for operator intervention. It automatically collects samples at specified time intervals, improving accuracy, safety, and time efficiency. The system reduces cross-contamination, prevents exposure to oxygen or moisture in anaerobic conditions, and enhances reproducibility.

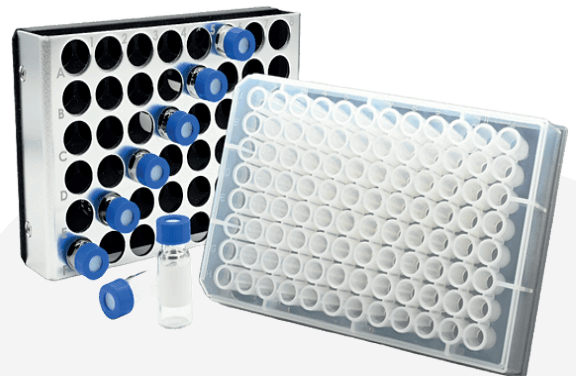
## Software options:



The **Samplify™ Automated Sampling System** offers flexible control options to suit any workflow. Whether you're integrating it with your own software using our open, fully documented serial command protocol, exploring its full functionality through our intuitive demo software, or managing it remotely via our powerful cloud platform.

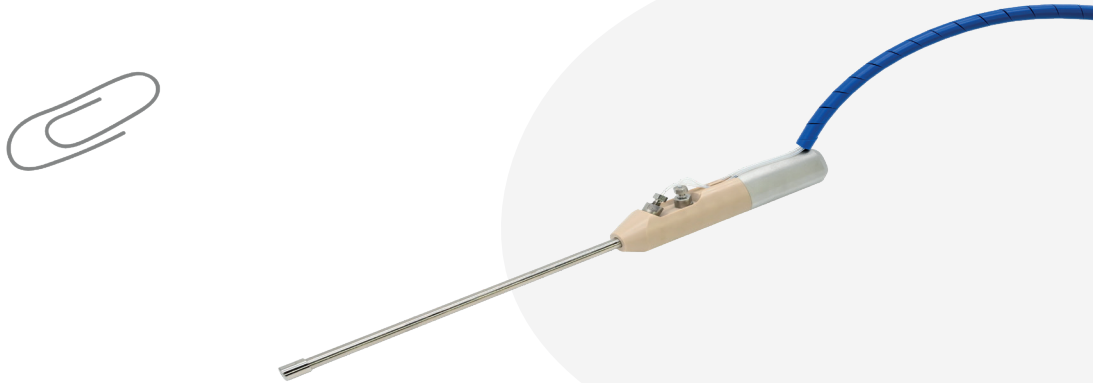


Adapt the **Samplify™ Automated Sampling System** to your specific requirements. The design is flexible in two ways - a variety of hardware options, including tray designs, needle length, vial type and volume; The software provides for the developer a full operational control of every module of the Liquid Handling Station. Full software integration support is provided for qualified customers.

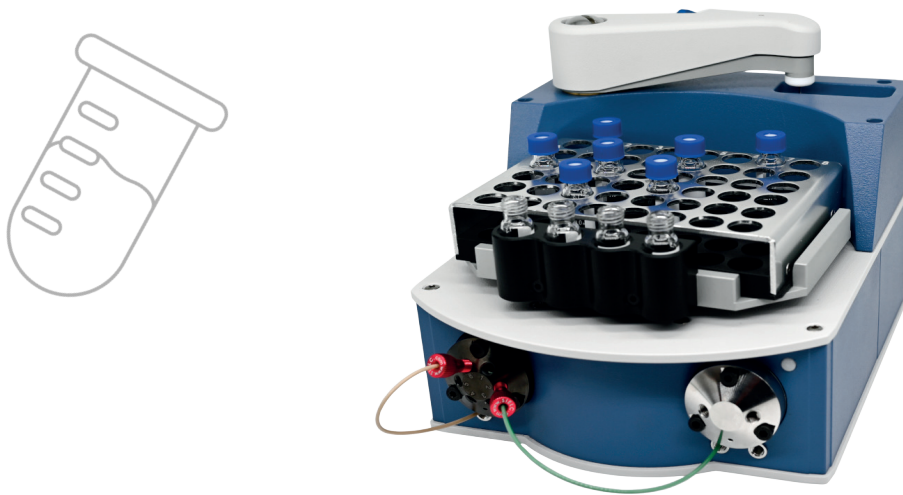


## System Components:

**Samplify™ Probe** – an electromechanical device for precise, automated liquid sampling from closed or open systems. Made from reactive chemical resistant materials, it ensures accurate, contamination-free sampling, even in high-temperature chemical solutions.



**Alltesta™ Mini Liquid Handling Station (LHS)** – automatically extracts and distributes samples to designated locations.

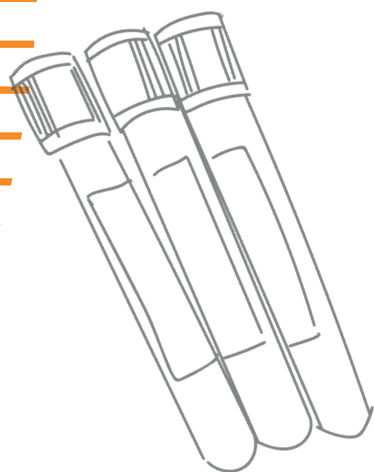


Together, the **Samplify™ Probe** and **Alltesta™ Mini LHS** provide cost-effective and reliable automation for analytical and liquid-handling applications. The compact design enables placement near reactors with short connection lines to minimize dispersion. For temperature-sensitive samples, the system can operate in a controlled environment, with an optional cooler to maintain low temperatures after collection.

# SAMPLIFY™ AUTOMATED SAMPLING SYSTEM

## Key Features

- **Standard vials:** Universal collection vials ensure compatibility with HPLC and GC.
- **Minimal Dispersion:** The compact device size enables close positioning to reactors, reducing connection line length and preventing sample loss.
- **Variable dilution ratio:** Desired dilution ratios can be easily achieved with a solvent.
- **OEM and API:** Interfacing available through API or OEM software.
- **Automatic mixing:** Automated vial shaking for fast mixing of samples with reagents.
- **Compact Probe:** Tiny Probe can be placed with the smallest vessel into a refrigerator, pressure chamber or oven.
- **Variable sample volume:** A unique design allows users to select the sample volume to be collected.
- **Up to 96 vessels:** Can accommodate 48 or 96 samples at one time.
- **Remote control:** All processes may be controlled and monitored remotely.



## Technical Specifications

	Samplify™ Automated Sampling Standard configuration	Samplify™ Automated Sampling Customizable configuration
<b>Dimensions (WHL)</b>	160 x 145 x 195 mm / 6.3 x 5.71 x 7.68 in	depends on configuration
<b>Weight</b>	2.3 kg / 5 lb	depends on configuration
<b>Syringe Capacity</b>	4000 µL low-pressure stainless	<ul style="list-style-type: none"> <li>• 4000 µL low-pressure stainless</li> <li>• 4000 µL low-pressure metal free</li> </ul>
<b>Draw/refill rates</b>	Up to 48,000 µL/min	depends on configuration
<b>Pressure</b>	Up to 250 psi	Up to 250 psi
<b>Needle</b>	Short (36mm)	<ul style="list-style-type: none"> <li>• Short (36 mm)</li> <li>• Long (46 mm)</li> <li>• Capillary metal free (36 mm)</li> </ul>
<b>Plate</b>	48 vials	<ul style="list-style-type: none"> <li>• 48 vials</li> <li>• 96-well plate</li> </ul>
<b>Volume Accuracy</b>	1 µL	depends on configuration
<b>Communication</b>	RS232 Virtual COM port via USB type B	RS232 Virtual COM port via USB type B
<b>Materials</b>	in contact with liquid SS316, PTFE, PEEK	in contact with liquid SS316, PTFE, PEEK
<b>Inlet/Outlet</b>	Thread 10-32 UNF compression type	Thread 10-32 UNF compression type

### Samplify™ Probe

<b>Dimensions (WHL)</b>	Base 1 x 1 inch, Tube DIA ¼ inch. Immersion length up to 6 inch
<b>Connection</b>	Optionable
<b>Materials</b>	in contact with liquid SS316, PTFE, PEEK
<b>Sample volume</b>	From 5 to 500 µL
<b>Max. pressure</b>	Max. working environment pressure 120 psi (8 bar)
<b>Max. temperature</b>	200 °C



# SAMPLIFY™ AUTOMATED SAMPLING SYSTEM

## Applications areas:

The **Samplify™ Automated Sampling System** is a highly versatile instrument that can be used in different analytical areas. Some of the most common areas include:



**Environmental Analysis:** Sampling of water and soil extracts for contaminant monitoring.



**Food & Beverage Industry:** Quality control and ingredient verification.



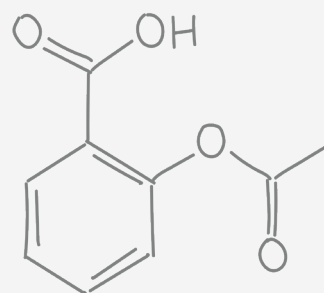
**Chemical and Pharmaceutical Research:** Continuous monitoring of chemical reactions and fermentation processes.



**Biotechnology & Bioprocessing:** Automated sampling for cell culture and microbial fermentation studies.



## Samplify™ Make sampling simpler



## Call to Action

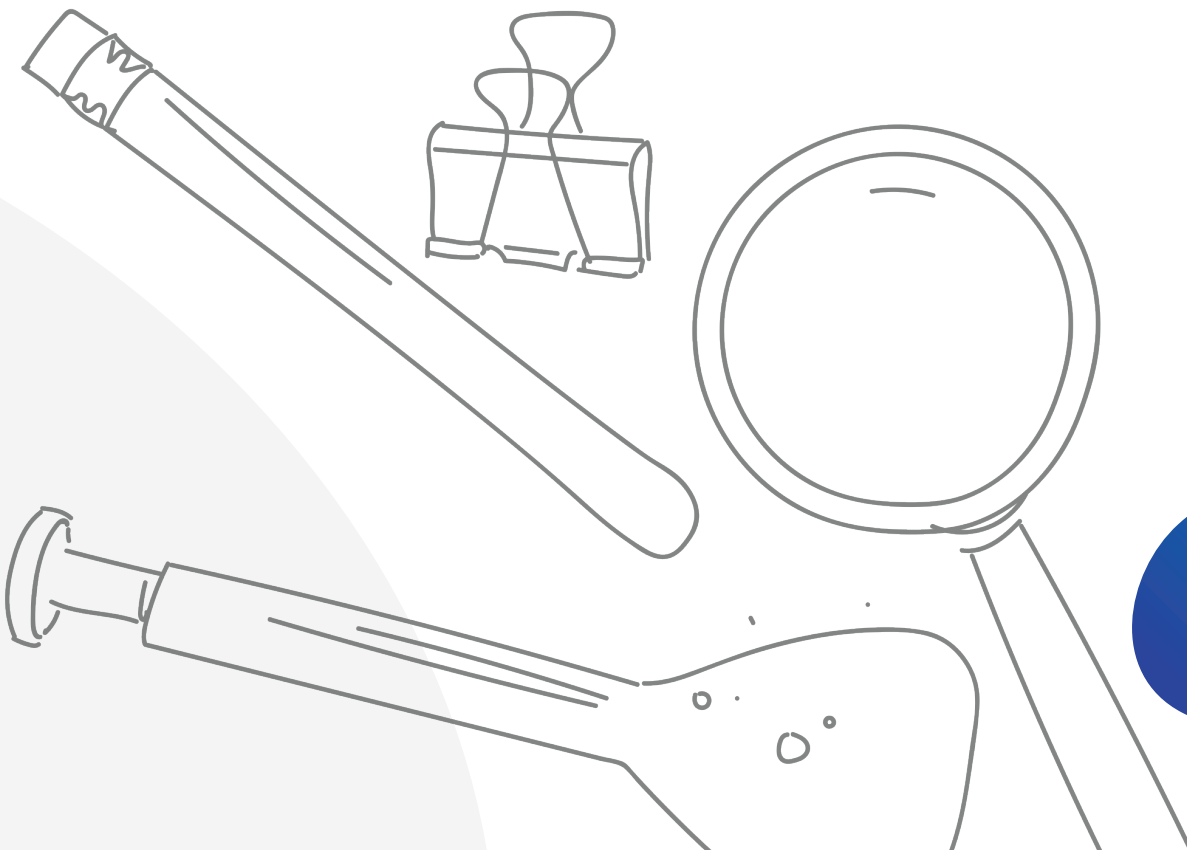
Unlock the potential of **Samplify™** for your lab today:

- Contact us to place an order or ask questions.
- Request a free method development consultation.
- Schedule a demonstration to see our analyzers in action.
- Visit our website or scan the QR code below for more details.

## Conclusion

With its customizable features, robust design, and versatile capabilities, the **Samplify™ Automated Sampling System** delivers exceptional value and performance for reliable automation solutions.

Learn more on our website or contact us for consultations and demonstrations.





## Contact Us

For Product Information

Email: [sales@sielc.com](mailto:sales@sielc.com)

For Accounts Payable:

Email: [finance@sielc.com](mailto:finance@sielc.com)

Call: 847 229-2629

Fax: 847 655-6079

SIELC Technologies:

804 Seton Ct.

Wheeling, IL USA 60090

